

Learn more about
**THE WONDROUS
WORLD OF WATER**

2025 ANNUAL CONSUMER Confidence Report

Zone 7 provides high-quality water to four major water retailers, along with a small number of direct customers, serving over a quarter-million people in the Tri-Valley including Pleasanton, Livermore, Dublin and the Dougherty Valley area of San Ramon.

Working collaboratively with our retail partners, we are able to make a world of difference by ensuring our water supply is safe, clean and sustainable.

All Zone 7 water supplied in 2025 met the regulatory standards set by the state and federal governments and, in almost all cases, the quality was significantly better than required.



SOURCE WATER ASSESSMENT

Zone 7 Water Agency draws from a diverse portfolio of drinking water sources, including local and imported surface water as well as groundwater from wells. We carefully monitor all these sources to ensure their continued quality and to protect the safety of our water supply.

A source water assessment is conducted on each groundwater well as required by the California State Water Resources Control Board (State Water Board). Sanitary surveys for surface water supplies are conducted every five years. The last sanitary survey for the California Delta and the State Water Project was completed in June 2022. The next survey is expected to be finished in 2027.

SOURCE WATER PROTECTION

Protecting our source water is an important part of providing safe drinking water to the public that meets the stringent Zone 7 water quality goals. By monitoring for potential contaminants and implementing best management practices, we can proactively address threats to water quality. For example, groundwater sources can be vulnerable to accidental releases from chemical/petroleum pipelines, leaking underground storage tanks, groundwater contamination plumes, septic tanks, landfills, and wastewater-collection systems. Surface water can become contaminated as it travels through the Sacramento and San Joaquin watersheds and the Delta. After leaving the Delta, water is transported to Zone 7 via the South Bay Aqueduct (SBA). The SBA water quality can become polluted from local cattle grazing, wildfires, wildlife activities, and recreational activities in the watersheds of the Bethany Reservoir and Lake Del Valle.

GROUNDWATER RECHARGE

Learn how we use imported surface water to recharge our local groundwater basin.



WHERE DOES THE TRI-VALLEY'S WATER COME FROM?



IMPORTED SURFACE WATER - The majority of our water supply originates as Sierra Nevada snowmelt and is conveyed by the State Water Project through the Delta and then via the South Bay Aqueduct.*



LOCAL SURFACE WATER - This is comprised of local rain runoff stored in Lake Del Valle.



GROUNDWATER - This supply, managed by Zone 7, is pumped from the aquifer that underlies the Livermore-Amador Valley; water in the aquifer mainly comes from strategic recharges made with imported surface water to ensure access during dry years.

Copies of any public outreach materials, source water assessment reports or watershed sanitary surveys are available at zone7waterca.gov/water-quality

If you need any more information or have any questions about this report, contact Angela O'Brien at 925-454-5748 or waterquality@zone7water.com

** In wet years, we store surplus State Water Project supplies in local and offsite groundwater basins for use when needed, and for reliability during droughts.*



ZONE 7 WATER SUPPLY



HOW CAN YOU HELP PROTECT SOURCE WATER?

Communities, citizen groups, and individuals can take an active role in protecting their drinking water sources from contamination.

Some Ways to Protect Source Water

- Limit the use of pesticides and fertilizers
- Reduce excess watering and runoff that washes chemicals into bodies of water
- Don't pour household hazardous waste into storm drains, down the drain, or on the ground
- Dispose of medications properly
- Properly maintain your septic system
- Participate in local creek clean-ups and restoration projects with the [Living Arroyos Program](#)

Zone 7's water supply typically includes approximately 60-80% treated surface water and 20-40% groundwater each year.

The amount of each type of source water varies depending on the season's precipitation, location and other conditions.

In 2025, Zone 7 delivered approximately 78% treated surface water and 22% groundwater.

WHAT'S IN YOUR WATER?

Water Quality Testing

As part of rigorous quality control, Zone 7 Water Agency regularly checks for a range of substances in our water supplies to ensure we can deliver safe and clean water to customers. The results table shows the average level and range of each detected regulated contaminant in our water supplies. Detected secondary standards and additional parameters are also listed.

Where Do Contaminants Come From?

The sources of drinking water (both tap and bottled water) include rivers, lakes, streams, ponds, reservoirs, springs, and wells. As water travels over the surface of the land or through the ground, it dissolves naturally occurring minerals and, in some cases, radioactive material, and it can pick up substances resulting from the presence of animals or from human activity. Contaminants that may be present in source water include:

MICROBIAL CONTAMINANTS, such as viruses and bacteria that may come from wastewater-treatment plants, septic systems, agricultural-livestock operations, landscaping, agriculture, and wildlife.

INORGANIC CONTAMINANTS, such as salts and metals, that can be naturally occurring or result from urban stormwater runoff, industrial or domestic wastewater discharges, oil and gas production, mining, or farming.

PESTICIDES AND HERBICIDES, which may come from a variety of sources such as agriculture, urban stormwater runoff, and residential uses.

ORGANIC CHEMICAL CONTAMINANTS, including synthetic and volatile organic chemicals, which are byproducts of industrial processes and petroleum production. They can also come from gas stations, urban stormwater runoff, and septic systems.

RADIOACTIVE CONTAMINANTS, which can be naturally occurring or the result of oil and gas production and mining activities.

In order to ensure that tap water is safe to drink, the USEPA and the State Water Board prescribe regulations that limit the amount of certain contaminants in water provided by public water systems. The U.S. Food and Drug Administration regulations and California law also establish limits for contaminants in bottled water that provide the same protection for public health.

TERMS TO KNOW

Maximum Contaminant Level (MCL): The highest level of a contaminant that is allowed in drinking water. Primary MCLs are set as close to the Public Health Goals or Maximum Contaminant Level Goals as is economically and technologically feasible. Secondary MCLs are set to protect the odor, taste and appearance of drinking water.

Maximum Contaminant Level Goal (MCLG): The level of a contaminant in drinking water below which there is no known or expected risk to health. MCLGs are set by the USEPA.

Maximum Residual Disinfectant Level (MRDL): The highest level of a disinfectant allowed in drinking water. There is convincing evidence that addition of a disinfectant is necessary for control of microbial contaminants.

Maximum Residual Disinfectant Level Goal (MRDLG): The level of a drinking water disinfectant below which there is no known or expected risk to health. MRDLGs do not reflect the benefits of the use of disinfectants to control microbial contaminants.

Public Health Goal (PHG): The level of a contaminant in drinking water below which there is no known or expected risk to health. PHGs are set by the California Environmental Protection Agency.

Primary Drinking Water Standard (PDWS): MCLs and MRDLs for contaminants that affect health, along with their monitoring and reporting requirements, and water-treatment requirements.

Treatment Technique (TT): A required process intended to reduce the level of a contaminant in drinking water.

Regulatory Action Level (AL): The concentration of a contaminant which, if exceeded, triggers treatment or other requirements that a water system must follow.

Running Annual Average (RAA): Test results based on an average of the previous four quarters.

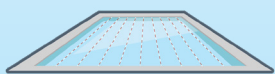
Range: Range of detected results from Not Detected (ND) to the highest test result based on all samples collected.

HOW TO READ THE TABLE

CONTAMINANT	STATE STANDARDS			ZONE 7 RESULTS	
	MCL	DLR (MRL)	PHG (MCLG) [MRDLG]	SURFACE WATER	
				AVERAGE	RANGE
① SELENIUM µg/L	② 50	③ 5	④ 30	⑤ ND	⑥ ND-5

- The contaminant being tested for in our laboratories
- The highest level of a contaminant allowed for drinking water. Our results must be lower than this amount
- The level at which we must report our results, even though they are lower than the standard
- Goal levels at which the State would like to keep our results below
- Average of test results
- Range of test results

So, how much is that? Let's compare:



There are 2.5 million liters of water in an Olympic-size swimming pool



mg/L = milligrams/liter or parts per million (ppm)
About 1/2 cup of salt in the pool



µg/L = micrograms/liter or parts per billion (ppb)
About 1 pinch of salt in the pool



ng/L = nanograms/liter or parts per trillion (ppt)
About 1 grain of salt in the pool

2025 WATER QUALITY TESTING RESULTS

JANUARY-DECEMBER 2025 WATER QUALITY DATA - CONTAMINANTS DETECTED IN TREATED WATER SUPPLY

PRIMARY DRINKING WATER STANDARDS, established by the State Water Board

CONTAMINANT	Maximum Contaminant Level (MCL)	DLR (MRL)	PHG (MCLG) [MRDLG]	DISTRIBUTION SYSTEM				Major Sources in Drinking Water
				Highest percentage of monthly positive samples:		Range of All Samples:		
Total coliform bacteria	5.0% of monthly samples are positive		(0)	1.4%				Naturally present in the environment
				Highest Locational RAA:	Range of All Samples:			
Total trihalomethanes (TTHMs), µg/L	Locational Running Annual Average (RAA): 80	1*	NA	39	15 - 47			Byproduct of drinking water disinfection
Haloacetic acids (five) (HAA5), µg/L	Locational RAA: 60	1*	NA	23	5 - 25			
Chloramines as Chlorine, mg/L	Maximum Residual Disinfectant Level (MRDL) = 4.0		[4]	Systemwide RAA:	Range of Monthly Average Samples:			Drinking water disinfectant added for treatment
				3.0	2.8 - 3.1			
				TREATED WATER SUPPLY				
				SURFACE WATER		GROUNDWATER		
Turbidity	TT = 1 NTU Maximum		NA	Highest Level Found: 0.1 NTU		NA		Soil runoff
	TT = 95% of samples ≤ 0.3 NTU		NA	% of samples ≤ 0.3 NTU: 100%		NA		
Total Organic Carbon	TT = RAA Removal Ratio ≥ 1.0		NA	Lowest Quarterly RAA Ratio: 1.1		NA		Various natural and man-made sources
Inorganic Chemicals				Average	Range	Average	Range	
Arsenic, µg/L	10	2	0.004	ND	ND	ND	ND - 2	Erosion of natural deposits
Barium, µg/L	1000	100	2000	ND	NA	216	ND - 300	Erosion of natural deposits; discharge of drilling wastes; and discharge from metal refineries
Bromate, mg/L	RAA: 10	5	0.1	Highest RAA: ND	ND	NA	NA	Byproduct of drinking water disinfection
Chromium, Hexavalent (Cr6), µg/L	RAA: 10	0.1	0.02	NA	NA	Highest RAA***: 4.0 Systemwide Average: 5.9	3.7 - 7.6*** 3.0 - 8.4	Erosion of natural deposits
Chromium, Total, µg/L	50	10	100	ND	ND	ND	ND - 10	
Fluoride, mg/L	2	0.1	1	ND	ND - 0.1	ND	ND - 0.1	Erosion of natural deposits; discharge from fertilizer and aluminum factories
Nitrate as Nitrogen, mg/L	10	0.4	10	ND	ND - 0.8	3.2	0.9 - 4.1	Erosion of natural deposits; runoff from fertilizer use; and leaching from septic tanks and sewage
Selenium, µg/L	50	5	30	ND	ND - 5	ND	ND - 7	Erosion of natural deposits; discharge from mines and industrial wastes.
Radionuclides								
Gross Alpha particle activity, pCi/L**	15	3	(0)	ND	ND	4	ND - 5	Erosion of natural deposits
Uranium, pCi/L	20	1	0.43	ND	ND	ND	ND - 3	Erosion of natural deposits

SECONDARY DRINKING WATER STANDARDS, established by State Water Board

Chloride, mg/L	500		--	58	24 - 157	80	20 - 112	Runoff/leaching from natural deposits; seawater influence
Conductivity, µS/cm	1600		--	440	270 - 732	806	214 - 1073	Substances that form ions when in water; seawater influence
Sulfate, mg/L	500	0.5	--	42	24 - 59	52	7.0 - 94	Runoff/leaching from natural deposits; industrial wastes
Total Dissolved Solids, mg/L	1000		--	238	145 - 375	478	97 - 672	Runoff/leaching from natural deposits
Turbidity, NTU	5	(0.05)	--	ND	ND	ND	ND	Soil runoff

ADDITIONAL PARAMETERS - Included to assist consumers in making health or economic decisions, i.e. low sodium diet, water softening, etc.

Alkalinity as calcium carbonate, mg/L	--		--	88	68 - 159	259	58 - 357	Naturally-occurring minerals
Boron, µg/L	--	100	--	38	ND - 120	361	ND - 770	Naturally-occurring minerals
pH	--		--	8.6	8.2 - 8.9	7.8	7.3 - 9.7	Naturally-occurring minerals
Potassium, mg/L	--		--	2.5	1.4 - 4.1	1.9	0.5 - 2.3	Naturally-occurring minerals
Silica, mg/L	--		--	8.1	ND - 12	20	ND - 31	Naturally-occurring minerals
Sodium, mg/L	--		--	61	34 - 113	54	29 - 76	Naturally-occurring minerals
Total Hardness as calcium carbonate, mg/L	--		--	88	56 - 152	318	35 - 452	Naturally-occurring minerals

* TTHMs each component DLR is 1 µg/L. HAA5 each component DLR is 1 µg/L except Monochloroacetic acid that has DLR of 2 µg/L. ** Gross alpha data is from 2024 except Hopyard Well 9 that was sampled in 2022. *** Cr6 data from Chain of Lakes Treatment Plant

Abbreviations/Units: Cr6 = Hexavalent Chromium, MCL = Maximum Contaminant Level, DLR = Detection Limit for Purposes of Reporting (State Water Board established), MRL = Method Reporting Level

NA = Not Applicable, PHG = Public Health Goal, MCLG = Maximum Contaminant Level Goal, MRDLG = Maximum Residual Disinfectant Level Goal,

RAA = Running Annual Average, TT = Treatment Technique, NTU = Nephelometric Turbidity Unit, µg/L = micrograms per liter, mg/L = milligrams per liter,

µS/cm = microsiemens per centimeter, pCi/L = picocuries per liter, ND = Non-Detect.



WHAT ARE PFAS (PER- AND POLYFLUOROALKYL SUBSTANCES)?

PFAS are a group of synthetic chemicals widely used in manufacturing a range of products found in our daily lives. People can be exposed to them through food, packaging, air pollution, dust, and drinking water. Scientific studies have shown that exposure to some PFAS in the environment may be linked to harmful health effects in humans and animals. Although certain PFAS are no longer manufactured in the U.S., these chemicals are still produced internationally and imported into the U.S. in consumer goods.

PFAS REGULATORY UPDATE

In April 2024, the U.S. Environmental Protection Agency (USEPA) established federal limits for six PFAS compounds in drinking water. Under that regulation, water systems must conduct initial PFAS monitoring by 2027 and provide treatment if needed by 2029. In May 2026, USEPA proposed revisions to those regulations. The proposed regulations would retain the limits for only the two most common PFAS (PFOA and PFOS) and allow water systems to request a two-year extension for compliance. For more information, visit epa.gov/pfas.

The State Water Board is in the process of adopting the federal PFAS regulations while developing its own regulations. In the interim, California has established drinking water notification and response levels for five PFAS. Notification and response levels are non-regulatory, health based advisory levels established by the State for contaminants in drinking water for which standards have not been established. When a contaminant is found at concentrations greater than its advisory level, certain notification requirements and recommendations apply. For more information, visit waterboards.ca.gov/pfas.

PROACTIVELY ADDRESSING PFAS

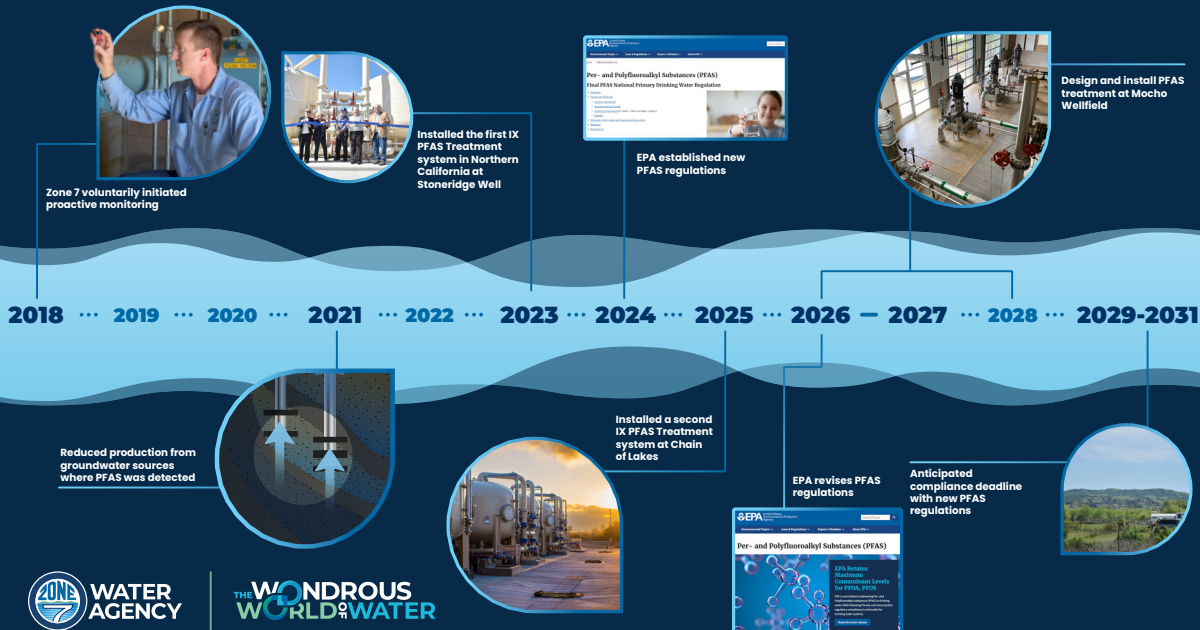
At Zone 7, protecting public health and safety is our top priority. We are pleased to share that in 2025, no PFAS were detected in our treated water, demonstrating our dedication to delivering the highest-quality water to our community.

PFAS have been found in some groundwater wells in Zone 7; however, these wells have been treated to levels below anticipated regulatory standards before the compliance deadline.



For more information about how we keep your water safe from PFAS [click here](#).

Zone 7 has taken proactive steps to plan, design, and construct new PFAS treatment facilities. We are utilizing specialized Ion Exchange (IX) resins to remove PFAS from affected groundwater sources. The Stoneridge Well Treatment Plant was commissioned in the fall of 2023, and the Chain of Lakes Wellfield Treatment Plant became operational in the spring of 2025. Additionally, Zone 7 has begun designing a third treatment facility at the Mocho Wellfield, which is expected to be completed by the summer of 2028. This upcoming facility will further enhance Zone 7's ability to address PFAS contamination, improve water quality, and restore the groundwater pumping capacity on which Zone 7 relies for water supply reliability, especially during droughts when imported water is limited.



HEXAVALENT CHROMIUM

Hexavalent chromium, also known as chromium-6 (Cr6), is a heavy metal found naturally in the environment and used in some industrial processes. While another form of the metal—trivalent chromium (chromium-3)—is a necessary nutrient for human health, the hexavalent form can be toxic and is a known carcinogen. In California, most chromium-6 in drinking water occurs naturally from the erosion of mineral deposits.

In October 2024, the State Water Board established a new strict drinking water standard for chromium-6 at 10 micrograms per liter (µg/L). All large water systems in the State must meet this requirement by October 2026. Before October 2024, chromium-6 was regulated under a “total chromium” standard of 50 µg/L in California.

Chromium-6 is naturally present in the Tri-Valley’s groundwater basin. Zone 7 regularly tests its water supplies to comply with new state regulations. All tested sources had chromium-6 levels below 10 µg/L, except for one well , where on-site blending reduced levels below the regulatory standard. Zone 7 continues to monitor these levels and is exploring long-term treatment solutions to ensure continued compliance and maintain reliable water quality.

For more information, visit waterboards.ca.gov/drinking_water/certlic/drinkingwater/Chromium6

LEAD AND COPPER RULE AND CORROSION CONTROL

In October 2024, USEPA issued additional improvements to the Lead and Copper Rule in order to better safeguard children and communities from lead exposure. For more information on these changes, visit epa.gov/ground-water-and-drinking-water/proposed-lead-and-copper-rule-improvements

Zone 7 and local retailers have been in compliance with the Lead and Copper Rule requirements for many years and will continue to maintain compliance with the revised regulatory requirements. In 2024, Zone 7 completed a service line material inventory confirming that none of the service lines within its system are made of lead. For more information, visit zone7waterca.gov/materials

The table below provides a summary of the most recent tap sampling events. Compliance monitoring is conducted once every three years.

Contaminant	System	Last Sample Event	No of Samples Collected	90th Percentile Level Detected	Number of Sites Exceeding AL	Action Level (AL)	Public Health Goal (PHG)
Lead (µg/L)	City of Livermore	August 2025	31	ND	None	15	0.2
Copper (µg/L)			31	139	None	1300	300
Lead (µg/L)	Cal Water	August 2024	32	7.6	1	15	0.2
Copper (µg/L)			32	200	None	1300	300
Lead (µg/L)	City of Pleasanton	September 2025	68	ND	2	15	0.2
Copper (µg/L)			68	258	None	1300	300
Lead (µg/L)	DSRSD	August 2025	31	ND	None	15	0.2
Copper (µg/L)			31	307	None	1300	300

If present, elevated levels of lead can cause serious health problems, especially for pregnant women and young children. Lead in drinking water is primarily from materials and components associated with service lines and home plumbing. Zone 7 Water Agency is responsible for providing high-quality drinking water, but cannot control the variety of materials used in plumbing components. When your water has been sitting for several hours, you can minimize the potential for lead exposure by flushing your tap for 30 seconds to 2 minutes before using water for drinking or cooking. If you are concerned about lead in your water, you may wish to have your water tested. Information on lead in drinking water, testing methods, and steps you can take to minimize exposure is available from the Safe Drinking Water Hotline or at epa.gov/safewater/lead.

CROSS-CONNECTION CONTROL AND BACKFLOW PREVENTION

A cross-connection is any connection between drinking water and a potential source of contamination, which can allow pollutants to enter the water system. Zone 7’s Cross-Connection Control Program helps safeguard our water distribution system from contamination by requiring regular testing and the installation of backflow prevention devices, which prevent water from flowing backward into the system. For more information, visit zone7waterca.gov/crossconnection

EDUCATIONAL INFORMATION

Drinking water, including bottled water, may reasonably be expected to contain at least small amounts of some contaminants. The presence of contaminants does not necessarily indicate that water poses a health risk. More information about contaminants and potential health effects can be obtained by calling USEPA's Safe Drinking Water Hotline 1-800-426-4791.

Some people may be more vulnerable to contaminants in drinking water than the general population. Immuno-compromised persons such as persons with cancer undergoing chemotherapy, persons who have undergone organ transplants, people with HIV/AIDS or other immune system disorders, some elderly, and infants can be particularly at risk from infections. These people should seek advice about drinking water from their health care providers. USEPA/Centers for Disease Control (CDC) guidelines on appropriate means to lessen the risk of infection by *Cryptosporidium* and other microbial contaminants are available from the Safe Drinking Water Hotline 1-800-426-4791.



WE WELCOME YOUR PARTICIPATION

Zone 7 Water Agency is committed to transparency and invites public participation. You are invited to engage in our public forum and voice questions or concerns about your drinking water. Regular meetings of the Board of Directors are open to the public and held the third Wednesday of each month at 7 p.m. Special meetings are scheduled as needed. Meeting agendas are posted online at zone7waterca.gov.

Este informe contiene información muy importante sobre su agua potable. Tradúzcalo o hable con alguien que lo entienda bien.

(This report contains important information about your drinking water. Translate it, or speak with someone who understands it.)



100 North Canyons Parkway
Livermore, CA 94551 | 925-454-5000
zone7waterca.gov